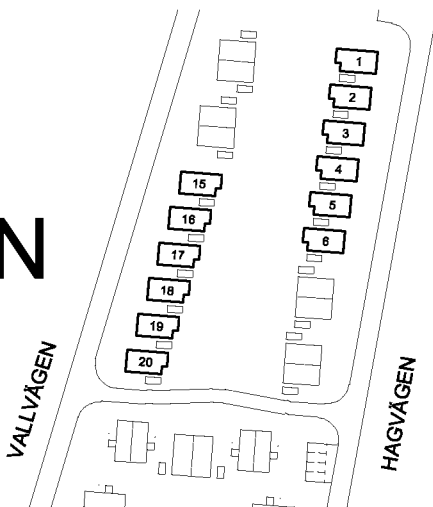


BRF VALLVÄGEN



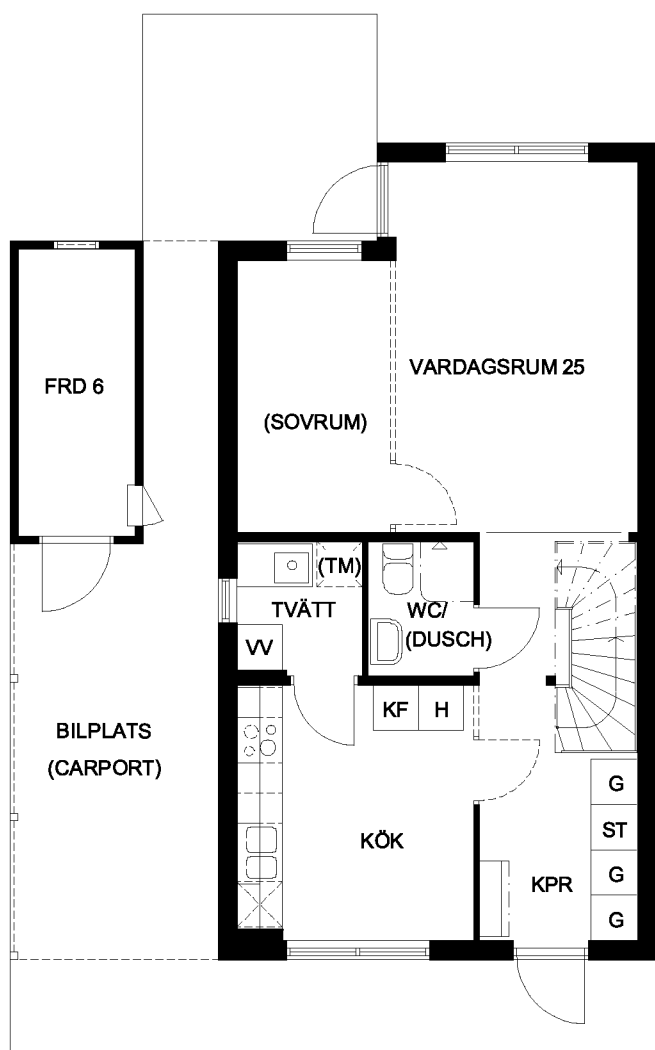
LGH-NR:

1, 2, 3, 4, 5, 6 - TYP Ar

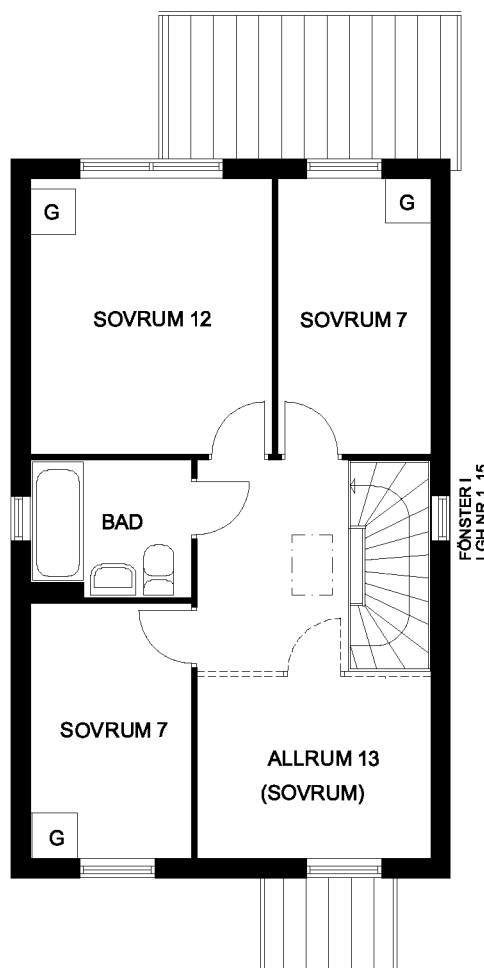
15, 16, 17, 18, 19, 20 - TYP As

Ar = rättvänd (visas nedan)

As = spegelvänd



ENTRÉPLAN (Ar)

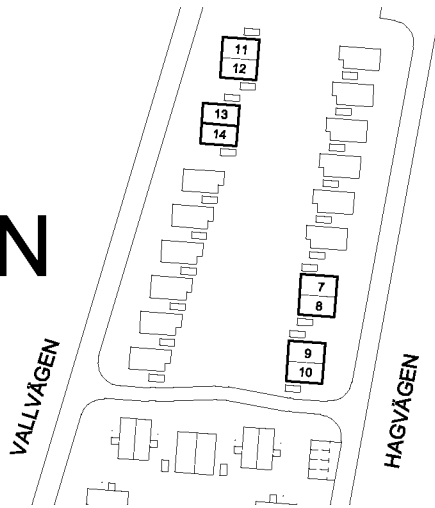


ÖVERPLAN (Ar)

TYP A

5 RK - 100 (+6 FRD) kvm

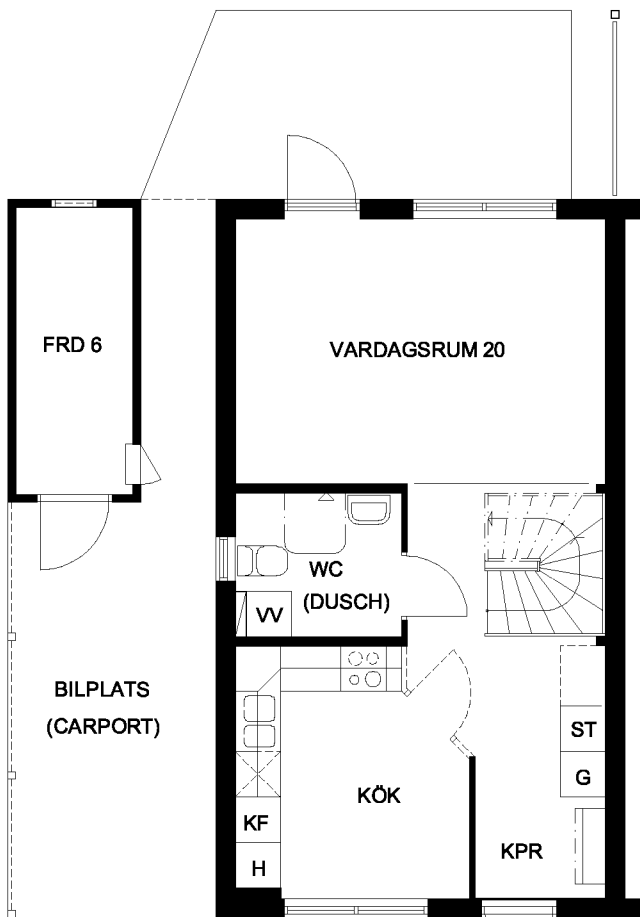
BRF VALLVÄGEN



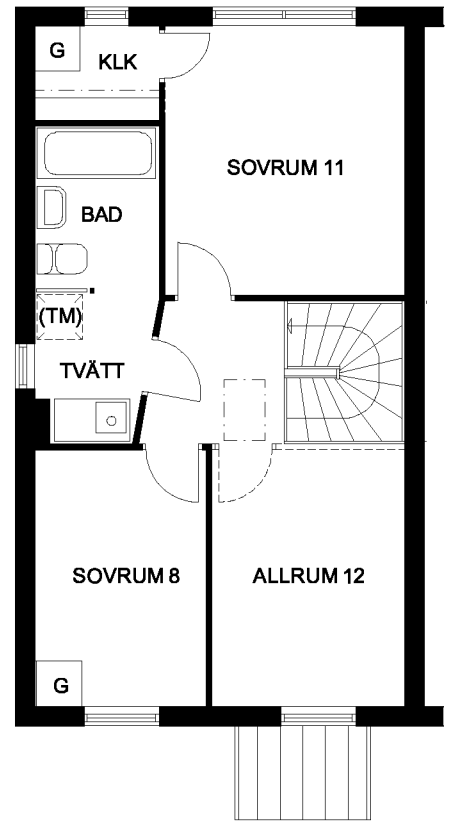
LGH-NR:

8, 10, 11, 13 - TYP Br
7, 9, 12, 14 - TYP Bs

Br = rättvänd (visas nedan)
Bs = spegelvänd



ENTRÉPLAN (Br)



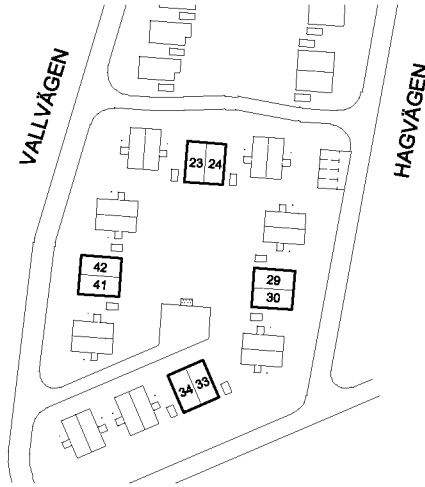
ÖVERPLAN (Br)



TYP B

4 RK - 88 (+6 FRD) kvm

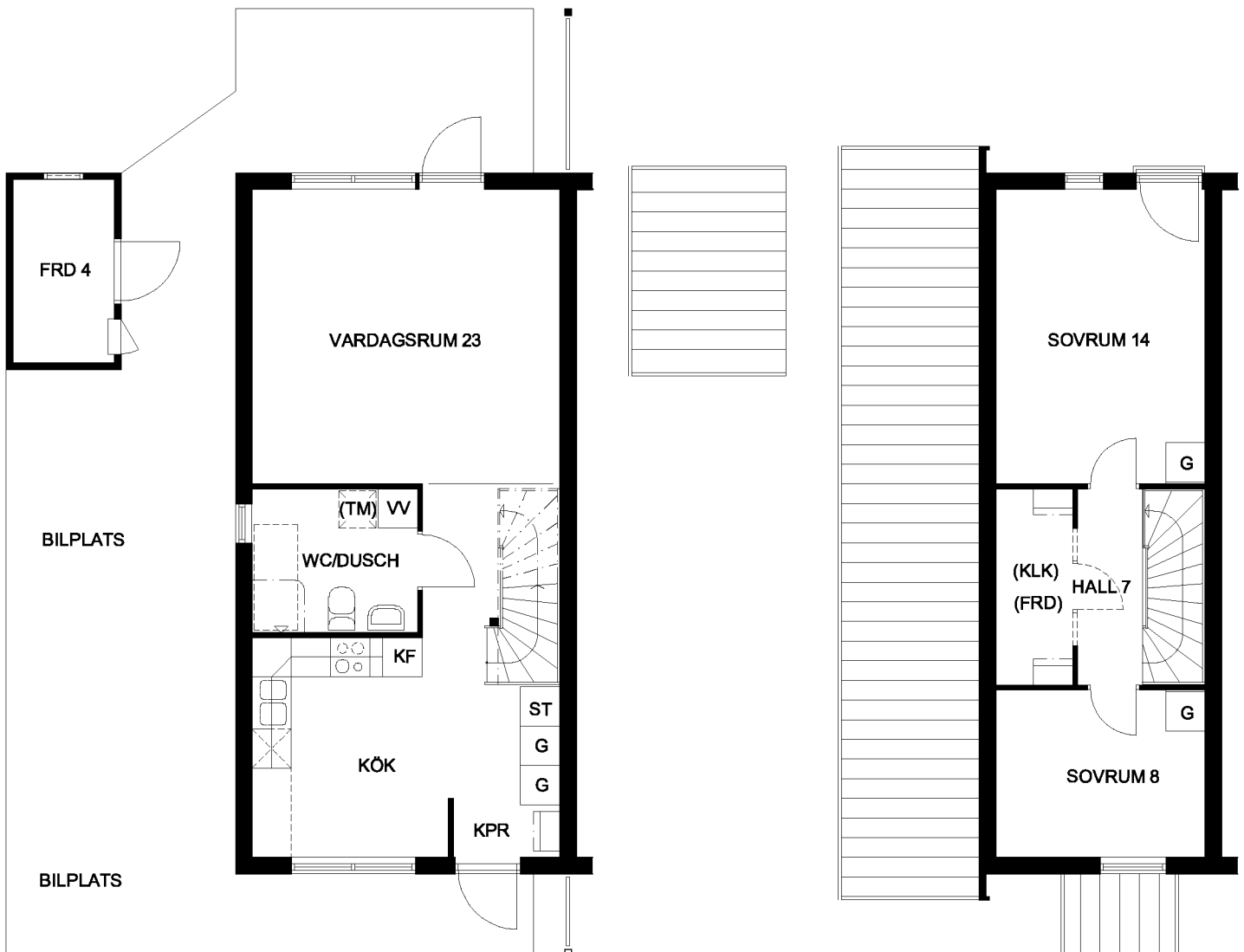
BRF VALLVÄGEN



LGH-NR:

24, 30, 33, 42 - TYP Cr
23, 29, 34, 41 - TYP Cs

Cr = rättvänd (visas nedan)
Cs = spegelvänd



ENTRÉPLAN (Cr)



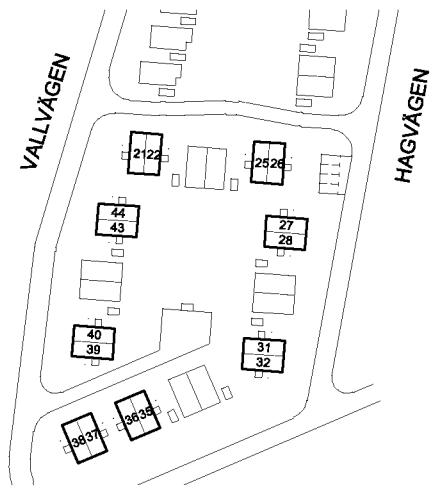
ÖVERPLAN (Cr)

TILLVAL:
ALT PLANLÖSNING
SE BAKSIDAN

TYP C

3-4 RK - 81 (+4 FRD) kvm

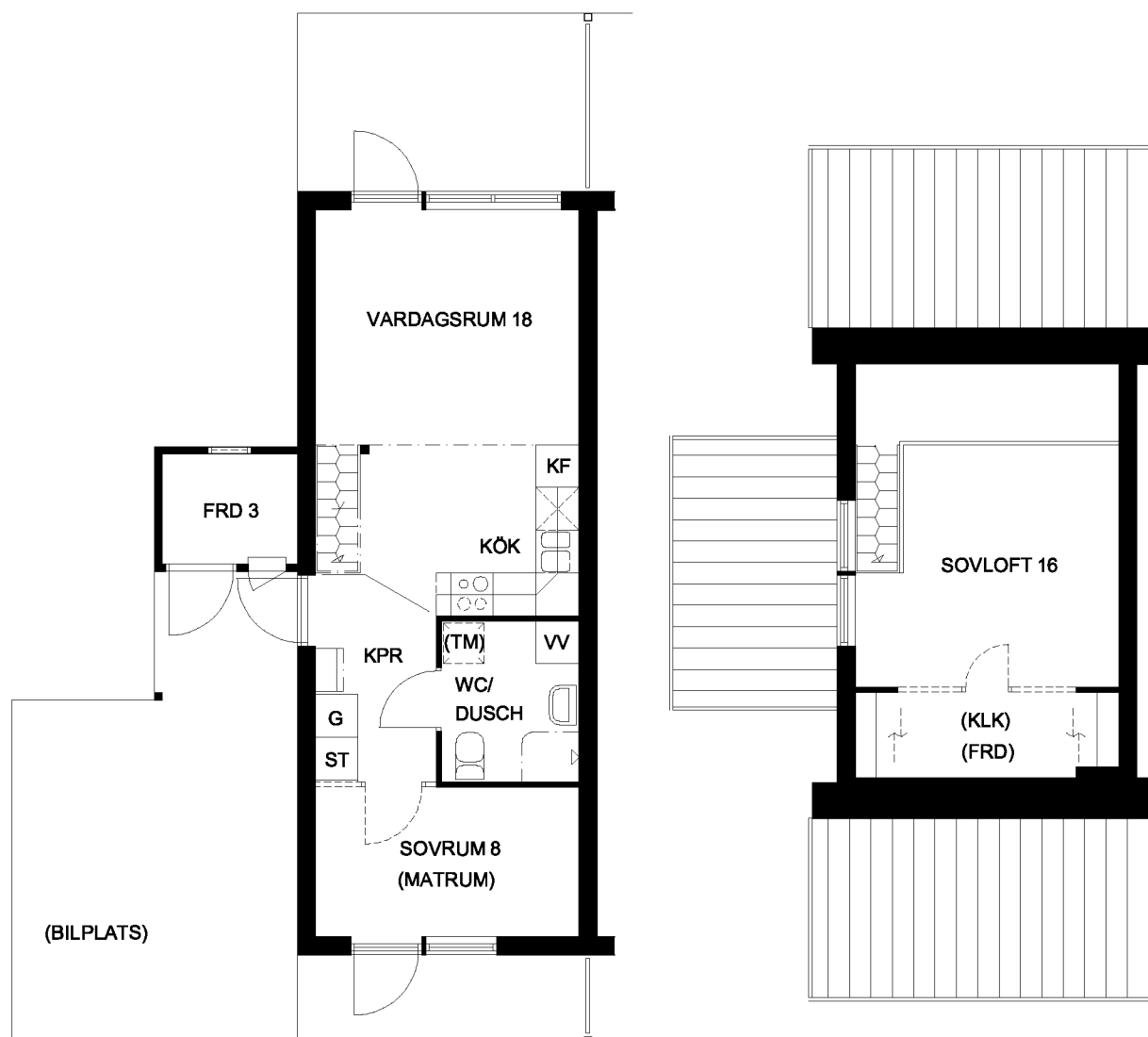
BRF VALLVÄGEN



LGH-NR:

22, 26, 28, 32, 35, 37, 40, 44 - TYP Dr
21, 25, 27, 31, 36, 38, 39, 43 - TYP Ds

Dr = rättvänd (visas nedan)
Ds = spegelvänd



ENTRÉPLAN (Dr)



ÖVERPLAN (Dr)

TILLVAL:
ALT PLANLÖSNING
SE BAKSIDAN

TYP D

2-3 RK - 55 (+3 FRD) kvm